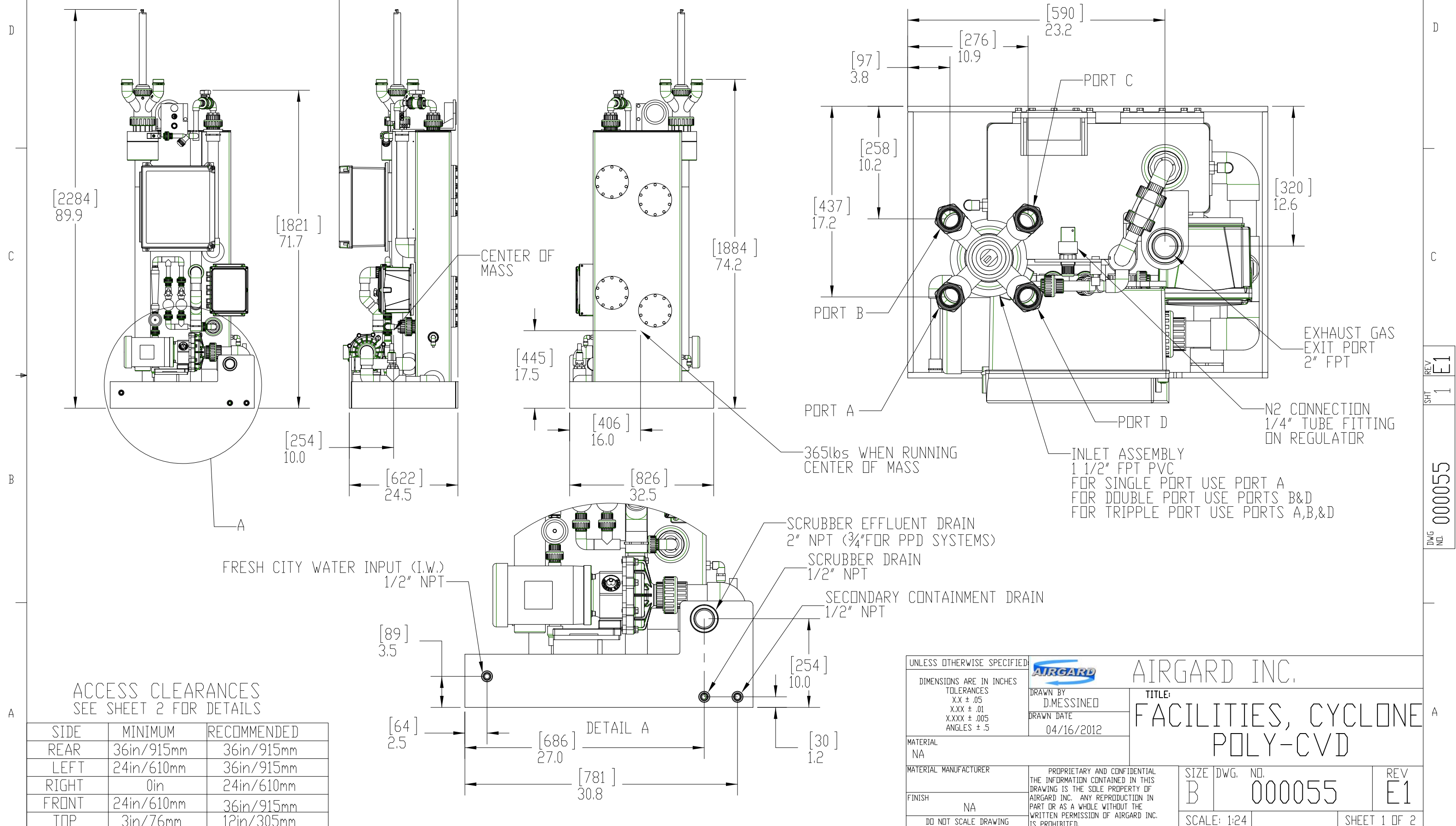


REV	DESCRIPTION	BY	DATE
E1	PROTOTYPE	DM	04/16/2012

REAR VIEW

RIGHT VIEW

FRONT VIEW



FRESH CITY WATER INPUT (I.W.)
1/2" NPT

365lbs WHEN RUNNING
CENTER OF MASS

INLET ASSEMBLY
1 1/2" FPT PVC
FOR SINGLE PORT USE PORT A
FOR DOUBLE PORT USE PORTS B&D
FOR TRIPPLE PORT USE PORTS A,B,&D

EXHAUST GAS
EXIT PORT
2" FPT

N2 CONNECTION
1/4" TUBE FITTING
ON REGULATOR

SCRUBBER EFFLUENT DRAIN
2" NPT (3/4" FOR PPD SYSTEMS)

SCRUBBER DRAIN
1/2" NPT

SECONDARY CONTAINMENT DRAIN
1/2" NPT

ACCESS CLEARANCES
SEE SHEET 2 FOR DETAILS

SIDE	MINIMUM	RECOMMENDED
REAR	36in/915mm	36in/915mm
LEFT	24in/610mm	36in/915mm
RIGHT	0in	24in/610mm
FRONT	24in/610mm	36in/915mm
TOP	3in/76mm	12in/305mm

UNLESS OTHERWISE SPECIFIED: DIMENSIONS ARE IN INCHES TOLERANCES XX ± .05 X.XX ± .01 X.XXX ± .005 ANGLES ± .5				AIRGARD INC. TITLE: FACILITIES, CYCLONE POLY-CVD	
MATERIAL NA		DRAWN BY D.MESSINED		DRAWN DATE 04/16/2012	
MATERIAL MANUFACTURER		PROPRIETARY AND CONFIDENTIAL THE INFORMATION CONTAINED IN THIS DRAWING IS THE SOLE PROPERTY OF AIRGARD INC. ANY REPRODUCTION IN PART OR AS A WHOLE WITHOUT THE WRITTEN PERMISSION OF AIRGARD INC. IS PROHIBITED.		SIZE DWG. NO. B 000055	
FINISH NA		DO NOT SCALE DRAWING		SCALE: 1:24	
				REV E1	
				SHEET 1 OF 2	

DWG NO. 000055
 SHT 1
 REV E1